

Remote Control User Manual  
Ellison II  
Smart Toilet  
GBWB802

Thank you for choosing our product. Please read the instructions carefully before installation. Keep this copy of the instructions available for future maintenance and reference.

# Contents

## Installation and Preparation for Use

01. Installing the Remote Control \_\_\_\_\_ 01

02. Remote control battery installation \_\_\_\_\_ 01

## Usage Instructions

01. Remote control diagram \_\_\_\_\_ 02

02. Rear/Front washing \_\_\_\_\_ 03

03. Drying/Dryer temperature \_\_\_\_\_ 04

04. Water volume adjustment \_\_\_\_\_ 04

05. Nozzle position adjustment \_\_\_\_\_ 04

06. Energy saving \_\_\_\_\_ 04

07. Water temperature adjustment \_\_\_\_\_ 05

08. Seat temperature adjustment \_\_\_\_\_ 05

09. Night light \_\_\_\_\_ 05

10. Toilet flush (half/full/auto) \_\_\_\_\_ 05

11. Toilet seat and lid (open/close/auto) \_\_\_\_\_ 06

12. Auto deodorization \_\_\_\_\_ 06

13. Water tank flush volume adjustment \_\_\_\_\_ 06

14. Other modes and functions \_\_\_\_\_ 07

15. Warranty \_\_\_\_\_ 07

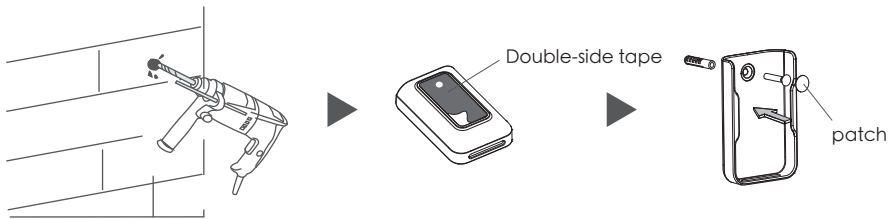
# Installation and Preparation for Use

## Installing the Remote Control

Please follow the remote control holder installation instructions for Method 1 or Method 2, as desired.

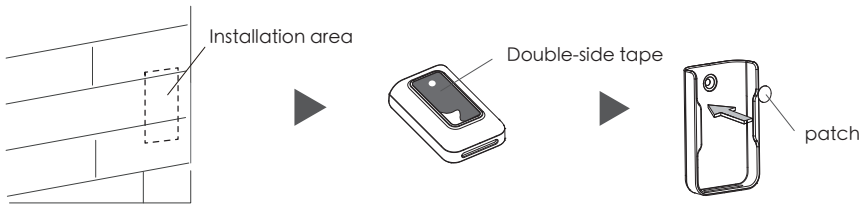
### Installing the Remote Control Holder - Method 1:

1. Drill a 6 mm diameter hole in the wall, to a depth of about 35 mm.
2. Remove the double-sided adhesive tape backing on the back of the remote control holder.
3. Install a wall anchor in the drilled hole. Next, making sure that the hole on the remote control holder aligns with the hole drilled in the wall, and that the remote control holder is vertically positioned, firmly stick the adhesive side of the remote control holder to the wall. Then, secure the remote control holder to the wall with a screw. Lastly, tape the patch over the exposed screw on the remote holder.



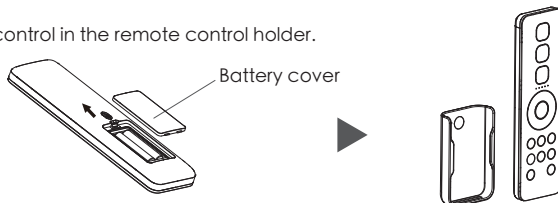
### Installing the Remote Control Holder - Method 2:

1. Before installing the remote control holder, clean and dry the installation area.
2. Remove the double-sided adhesive tape backing on the back of the remote control holder.
3. Making sure that the remote control holder is vertically positioned, firmly stick the adhesive side of the remote control holder to the wall. Then, tape the patch over the exposed hole on the remote holder.



### Remote control battery installation:

1. Remove the battery cover on the remote control. Insert batteries in the correct orientation, then reinsert the battery cover.
2. Place the remote control in the remote control holder.

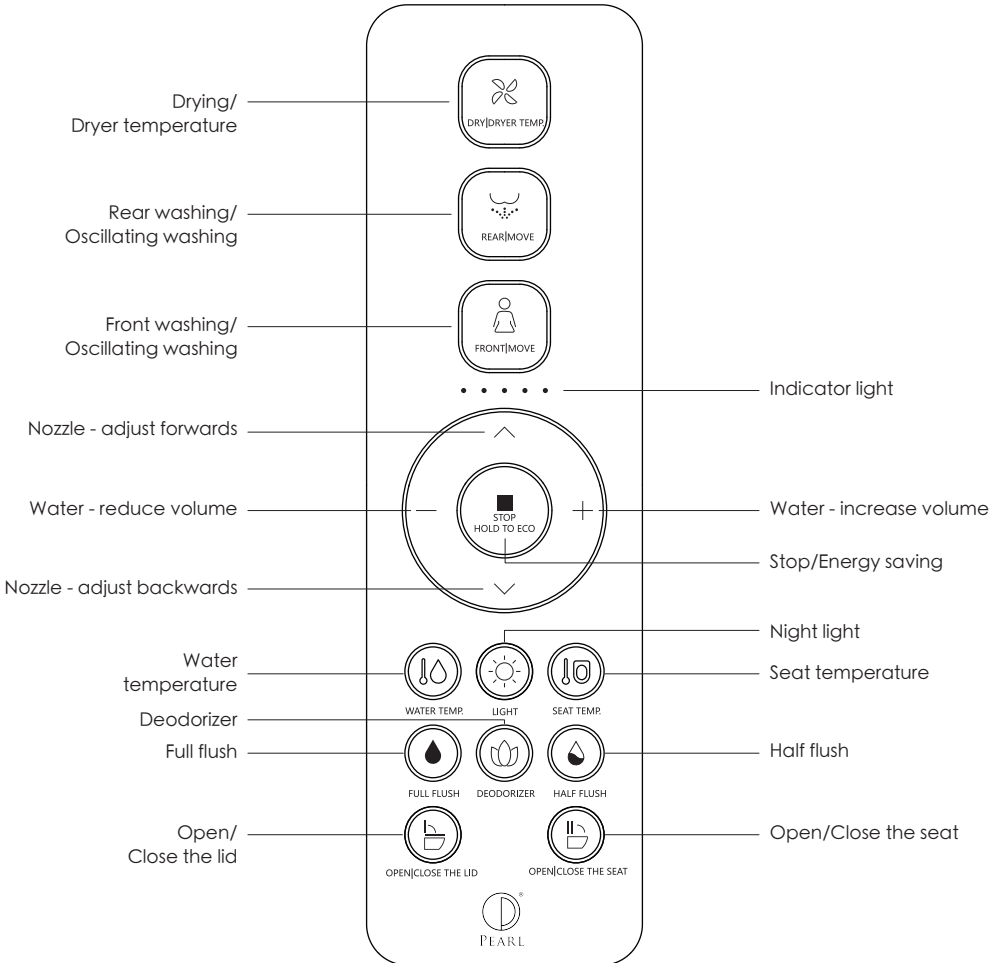


### Notice:

1. Before installation, ensure the remote control and holder will be within reach of the user while they are seated on the toilet.
2. Do not install or use the product in wet or damp places such as a shower room.
3. Do not expose the product directly to water.

# Usage Instructions

## Remote Control Diagram



# Usage Instructions

## Notice:

- The user must be seated, and the buzzer must beep, before the following functions can be activated: Front/Rear Wash and Dryer.
- To prevent splashing, users must sit far back enough on the toilet seat and be in the correct seated position for washing.
- During a wash cycle, the user should press "STOP" before standing up. If "STOP" is not pressed, the nozzle will continue to spray water for 1-2 seconds after the user leaves the seat.

## REAR|MOVE



· Pressing the "REAR|MOVE" button once, the indicator light will display the current water temperature level, and the rear wash will begin. Pressing the "REAR|MOVE" button again will activate the rear oscillating wash, and the nozzle will move forwards and backwards to cover a bigger washing area. The wash cycle will stop automatically once complete. In the middle of a cycle, washing will stop immediately if the "STOP" button is pressed.

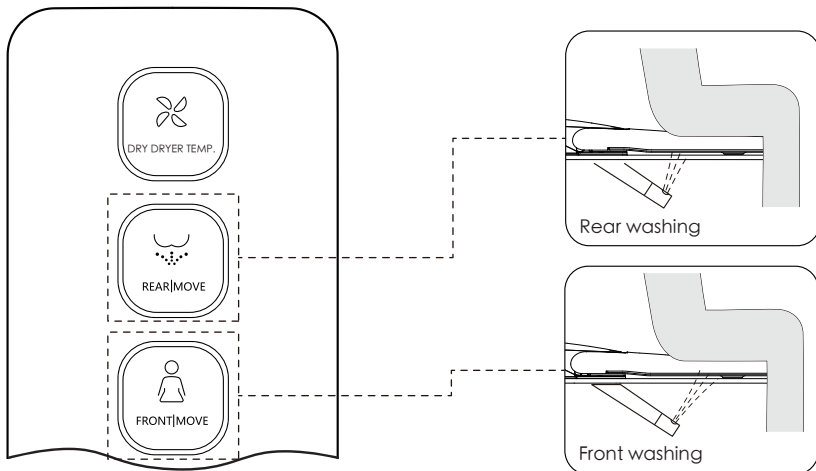
## FRONT|MOVE



· Pressing the "FRONT|MOVE" button once, the indicator light will display the current water temperature level, and the front wash will begin. Pressing the "FRONT|MOVE" button again will activate the front oscillating wash, and the nozzle will move forwards and backwards to cover a bigger washing area. The wash cycle will stop automatically once complete. In the middle of a cycle, washing will stop immediately if the "STOP" button is pressed.

## Pulse cleaning function (If available on your product.)

- During front/rear washing, long press "REAR|MOVE" or "FRONT|MOVE" button to turn on/off pulse cleaning mode.



# Usage Instructions

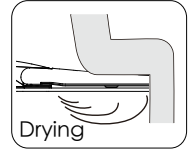
## DRY | DRYER TEMP (Only applies to products with the drying function.)



① Pressing the "🌀" button once, the indicator light will display the current air temperature level, and the drying cycle will begin.

The drying cycle will stop automatically once complete. In the middle of a cycle, the dryer will stop if the user leaves the seat.

② During a drying cycle, press the "🌀" button to adjust the air temperature between levels 0-5. The indicator light will display what the level is, and the levels range from no lights on for level 0 (room temperature), to five lights on for level 5 (warmest).



○ ○ ○ ○ ○

Room

temperature

● ○ ○ ○ ○

Level 1

● ● ○ ○ ○

Level 2

● ● ● ○ ○

Level 3

● ● ● ● ○

Level 4

● ● ● ● ●

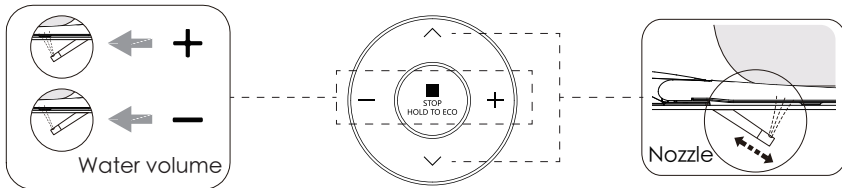
Level 5

## Water volume adjustment

· During a rear or front wash cycle, press the "+" or "-" button to increase or reduce the water spray volume. The indicator light shows the water volume level, with one light being the lowest volume, and five lights being the highest volume.

## Nozzle position adjustment

· During a rear or front wash cycle, press the "∧" or "∨" button to adjust the water nozzle position. There are five nozzle adjustment positions, and the light indicator will indicate the selected position.



## Energy saving



Long press "■" button to enter energy saving mode, long press "■" button again to exit energy saving mode.

In energy saving mode, the seat temperature is set to Level 1.

(Exception: If you have set the seat temperature to room temperature, the seat will be kept at room temperature in energy saving mode.)

Note:

Energy saving mode is only active while the product is not in use. When the seat is used, functional mode will begin. In functional mode, the seat will heat to the setting you have selected (unless set to room temperature). Once the seat is no longer in use, energy saving mode will resume.

# Usage Instructions

## Water temperature adjustment



WATER TEMP.

Press the "🌡️" button to adjust the water temperature between levels 0-5. The indicator light will display what the level is, and the levels range from no lights on for level 0 (room temperature), to five lights on for level 5 (warmest).

○ ○ ○ ○ ○    ● ○ ○ ○ ○    ● ● ○ ○ ○    ● ● ● ○ ○    ● ● ● ● ○    ● ● ● ● ●  
Room        Level 1        Level 2        Level 3        Level 4        Level 5  
temperature

## Seat temperature adjustment



SEAT TEMP.

Press the "🪑" button to adjust the seat temperature between levels 0-5. The indicator light will display what the level is, and the levels range from no lights on for level 0 (room temperature), to five lights on for level 5 (warmest).

○ ○ ○ ○ ○    ● ○ ○ ○ ○    ● ● ○ ○ ○    ● ● ● ○ ○    ● ● ● ● ○    ● ● ● ● ●  
Room        Level 1        Level 2        Level 3        Level 4        Level 5  
temperature

## Night light



LIGHT

- Manual mode: Short press the "☀️" button to turn on or turn off the the night light.
- Smart mode: Long press the "☀️" button to enter smart mode. In smart mode, the night light will turn on or off according to the surrounding light conditions. While in smart mode, short press the "☀️" button to exit smart mode. (Note: Factory default is smart mode: on).

## Toilet flush (half/full/auto)



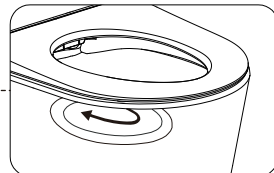
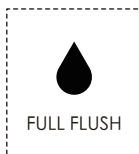
HALF FLUSH

- Short press "💧" button: the toilet will do a half flush.
- Short press "💧" button: the toilet will do a full flush.
- Long press "💧" button: the auto flush function will turn on/off.



FULL FLUSH


When the auto flush function is turned on, the toilet flushes automatically after the user leaves the seat.

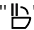


# Usage Instructions

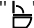
## Toilet seat and lid (open/close/auto)



Short press "  " button: the lid will open or close.

Short press "  " button: the seat will open or close.

OPEN/CLOSE THE LID

Long press "  " button: the auto lid open/close function will turn on/off.



OPEN/CLOSE THE SEAT

## Auto deodorization



DEODORIZER



Short press "  " button: the auto deodorization function will turn on/off.

While auto deodorization is on: Deodorization begins automatically when the user is seated, and stops when the user leaves. While drying, deodorization also stops.


(Note: Factory default is auto deodorization: on).

## Other modes and functions



### Quiet mode

- Press and hold the "  " button and press the "  " button to turn on/off quiet mode.


### Sterilization function (if available on your product)

- While toilet is not in use, long press the "  " button to begin the plasma sterilization cycle, which runs for 2 hours. During the cycle, if any button is pressed, or a user sits down, the sterilization cycle stops automatically.

### Automatic pre-wetting function (if available on your product):

- Press and hold the "  " button and press the "  " button to turn on/off the automatic pre-wetting function. While the function is turned on, automatic pre-wetting will happen when a user sits and is detected.

### Foot sensor function (if available on your product):

- Long press the "  " button to turn on/off the foot sensor function. The foot sensor deactivates while a user is seated.

## Usage Instruction

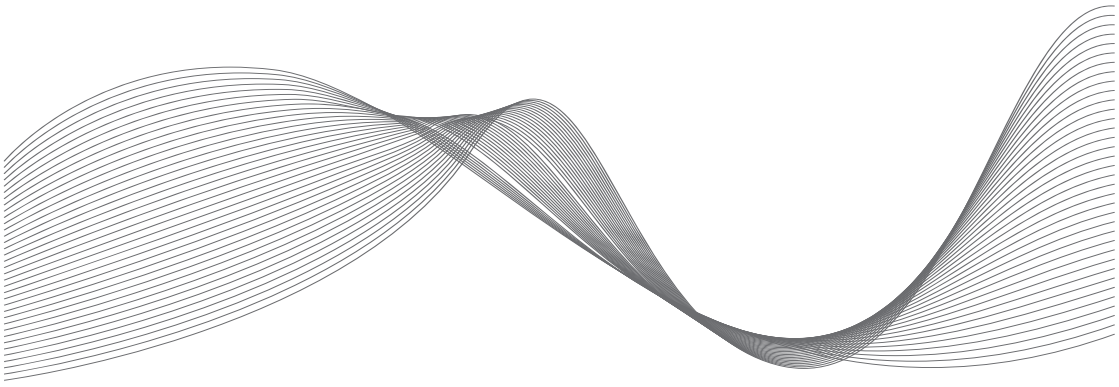
### Notes:

- Signal received sound: A "BEEP" will sound once when a button is pressed, indicating that the toilet unit has received the operation signal. If no "BEEP" sounds, the toilet unit has not received the signal, and you should adjust the direction of the remote and press the button again.
- In the event of a power outage while the wash nozzle is in use, the wand will not retract until power is restored. In an extended power outage, you may push the wand back into place gently by hand. To avoid causing damage, be careful while manually moving the wand, and do not push hard.

### Warranty:

- Please scan the QR code to access the product warranty information.





All images and pictures contained in this manual are for reference only, and may not exactly match the appearance of your product.