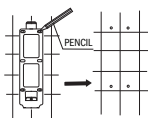


## INSTALLATION METHOD

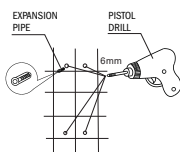
### 1 Marking the position of the holes

- Hold the mounting plate in the desired position. Mark the mounting hole areas with a pencil.



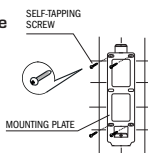
### 2 Drilling holes

- Drill four holes 6 mm in diameter at the marked locations. Press the expansion pipes into the holes.



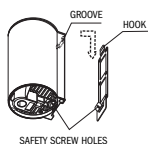
### 3 Installing the mounting plate

- Align the mounting plate with the holes and fix it to the wall with self tapping screws.



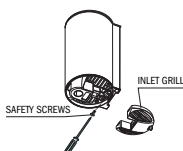
### 4 Installing the machine

- Attach the main machine onto the hooks of the installation panel. Press the machine down until the anti-theft screw holes on the machine and mounting plate align.



### 5 Fixing anti-theft screws

- Screw anti-theft bolts in the holes to fix the machine on the panel.
- Install the air inlet grill on the machine and make sure the grill is locked.



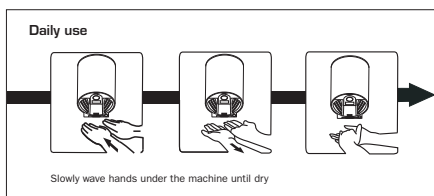
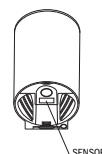
## TEST RUN

STEPS	CONFIRM THAT:	BE AWARE
1 Shake the machine gently	The machine is secure and does not shake	The machine will shake noisily when not firmly installed
2 Check the power and voltage	The rated voltage is being used	Accidents can occur and the machine will burn out if incorrect power is used
3 Switch on the power	Close external power supply switch or insert the power plugs	The power socket must match the machine plug. Check the power when the indicator light is dim
4 Insert hands to activate dryer	Air blows from the dryer at a high speed	Make sure hands are close to the sensor if the dryer doesn't activate

## DAILY USE AND MAINTENANCE

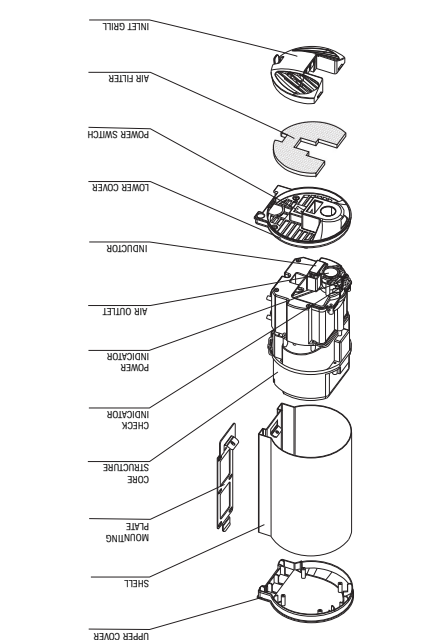
### External Maintenance

- Wipe with a soft dry cloth. Use a soft cloth dampened with neutral detergent if the unit becomes excessively dirty. Then wipe with a dry cloth. Do not use organic solvents, acid or alkali toilet cleaner, cleaning brushes, etc.
- Otherwise the surface finish may become damaged and discoloration may occur.



## PACKING LIST

MAIN MACHINE (1)  
5x25mm SELF TAPPING SCREW (4)  
5mm EXPANSION PIPE (4)  
USER MANUAL (1)



## PART NAMES

- Automatic heating system
- 45 seconds
- Auto-stop function: the built in timer will stop the unit after
- Elegant stainless steel shell
- Easy to maintain
- Eliminates need for paper towels
- No touch hand drying increases hygiene

## FEATURES

- Environmental Protection
- Electrical waste products should not be disposed of with household waste. Please recycle where facilities exist. Check with your Local Authority or retailer for recycling advice.

- For additional protection, the installation of a residual current device (RCD) having a rated residual operating current not exceeding 30mA is advisable in the electric circuit supplying the bathroom. Ask your installer for details and advice.
- For additional protection, the installation of a residual current device (RCD) having a rated residual operating current not exceeding 30mA is advisable in the electric circuit supplying the bathroom. Ask your installer for details and advice.
- If the cord is damaged, it must be replaced by the manufacturer, service agent or similarly qualified person in order to avoid a hazard.
- If a person responsible for their safety, been instructed on the proper use of the machine or have knowledge, unless they are supervised and/or have mental capabilities, or lack of experience and (including children) with reduced physical, sensory or the risk of electric shock.
- Power must be cut off during maintenance to eliminate abnormal heat leading to fire.
- If using with other appliances, the socket may produce
- Use dedicated socket
- fire, electric shock, and/or machine malfunction.
- If power tolerance is over +/- 10%, there will be
- Rated power is required
- This may cause electric shock, fire, or personal injury
- Do not modify or disassemble the unit unnecessarily; malfunction.
- Do not use in a wet environment, where it may come into direct contact with water or where condensation may form. This may cause electric shocks or unit
- Do not let the unit get wet, it can cause electric shocks
- Do not let children hang from the unit, this may cause the unit to fall
- Do not open the front panel. There is the risk of electrocution

carefully, it can lead to serious personal injury and property damage

## WARNING

Heating power	650-750W
Wind speed	244 kph
Input	1350W
Phase	Single-phase
Voltage	AC120V
Motor	Brush motor
Protection class	IPX1
Sensing distance	15-20cm
Appearance size	280x153x162mm
Weight	3.4kg

## SPECIFICATIONS



**HYPERSONIC**  
AUTOMATIC HAND DRYER

**GCA285MINI**  
USER MANUAL